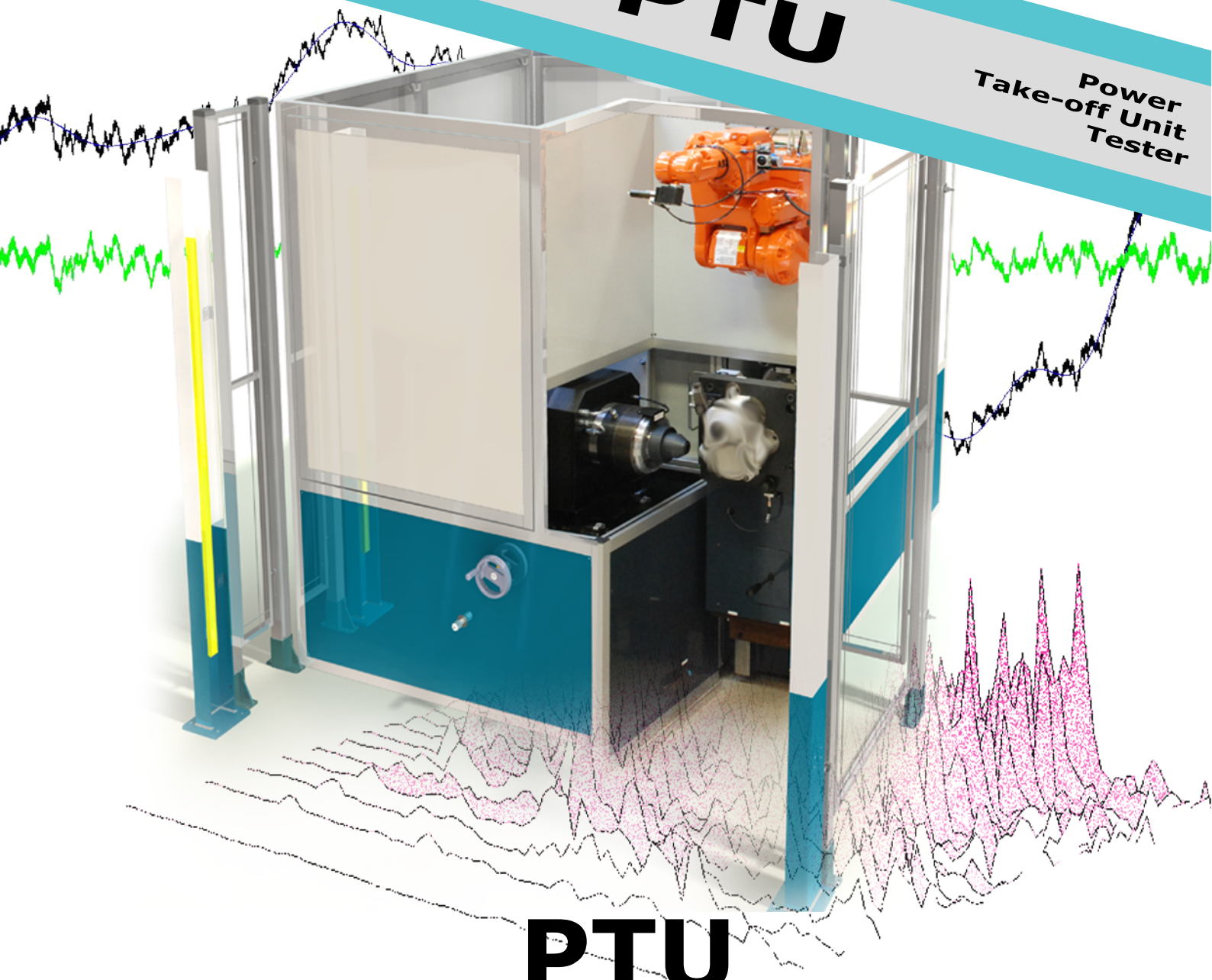


**Transmission  
Testing  
Machine**



# SE-PTU

**Power  
Take-off Unit  
Tester**



## PTU

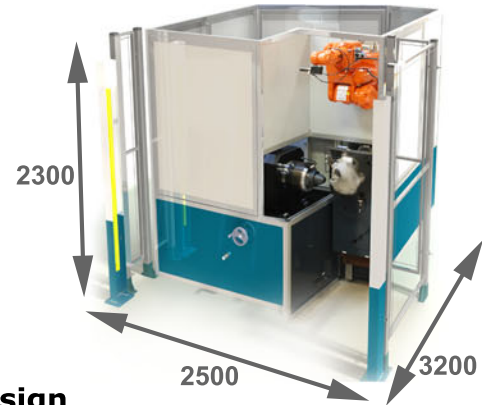
**End of Line Testing**  
**Noise Vibration and Harshness**  
**Transmission Error**  
**Single Flank Test**  
**Backlash Test**  
**Envelope Test**

# SE-PTU

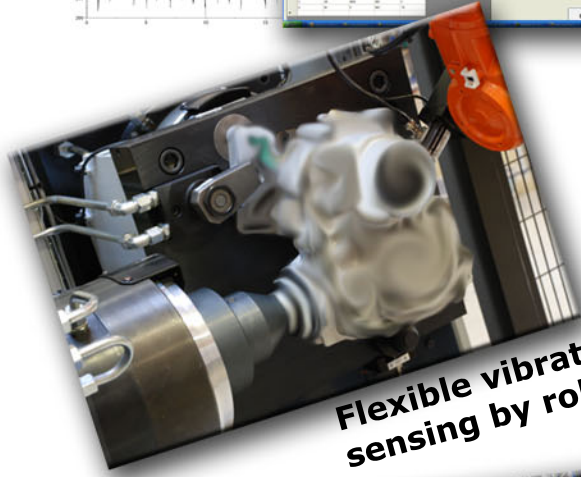
**Power Take-off Unit Tester**



**User friendly HMI  
Easy to create sequences  
Report generation and storage  
High accuracy encoders**



**Compact design  
Can be loaded manually or automatically  
Light curtain for manual operation  
Axis offset adjustable**



**Flexible vibration sensing by robot**



**"Quality is nothing without control"**

**Specification:**  
Spindle speed up to 6000 RPM  
Spindle torque up to 325 Nm

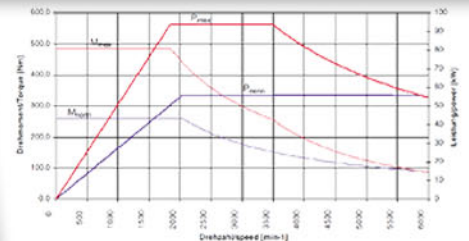
Foot print 2500 x 3200 mm  
Height 2300 mm  
(incl. fence. excl. electrical cabinet)

**Transmission test ability:**  
Transmission error  
Single flank test  
Noise, vibration and harshness  
Backlash test  
Envelope test

Other configurations on request



**Automatic End Of Line test application**



**Water cooled servo motors  
High precision torque sensor**

## SEJFO GROUP AB

Rosenlundsgatan 13, SE-731 50 Köping, Sweden  
Box 215, SE-731 25 Köping, Sweden  
Tel. +46 (0)221-341 10  
www.sejfo.se ▪ sejfo@sejfo.se