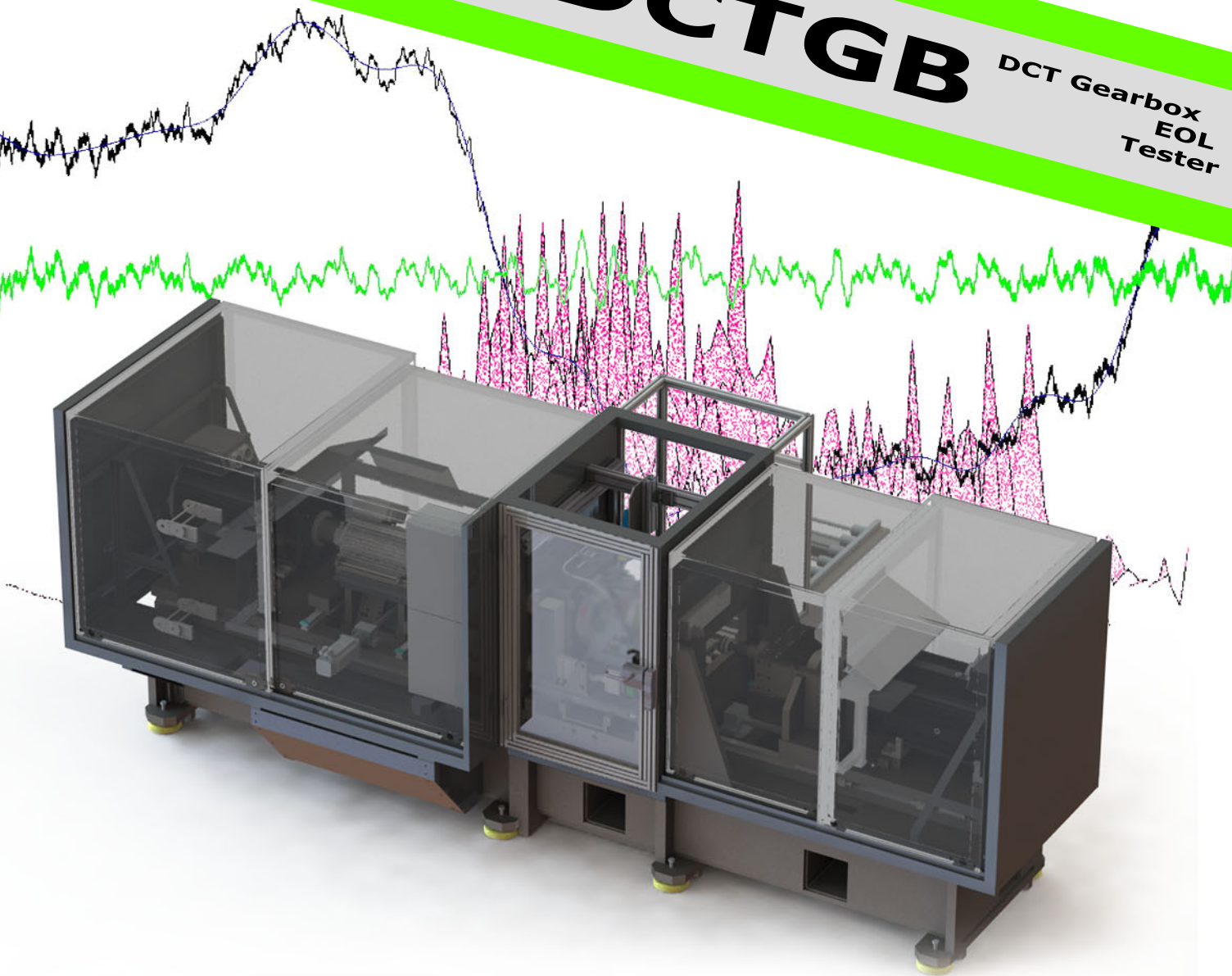


Transmission
Testing
Machine



SE-DCTGB

DCT Gearbox
EOL
Tester



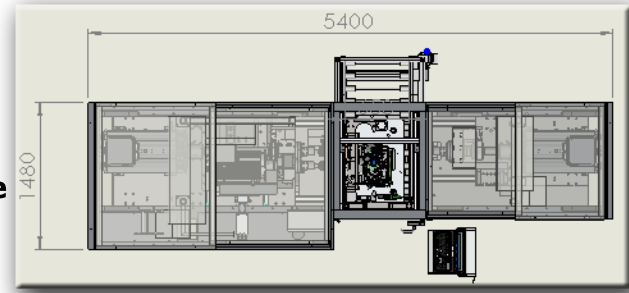
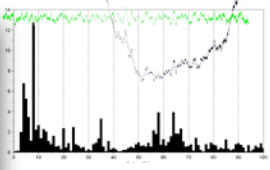
Gearbox
End of Line Testing
Noise Vibration and Harshness
Transmission Error
Single Flank Test
Function Test

www.sejfo.se

DCT Gearbox EOL Tester

SE-DCTGB

**User friendly HMI
Easy to create sequences
Report generation and storage
High accuracy encoders**



Fully automatic loading, testing and reporting

Direct or TCU communication with the gearbox

Specification example:
 Input spindle speed ~5000 rpm
 Input spindle torque ~190 Nm
 (Depends on the size of the gearbox)

Foot print 5400 x 1800 mm
 Height 2000 mm
 (excl. electr. cabinet, oil and shift equipment)

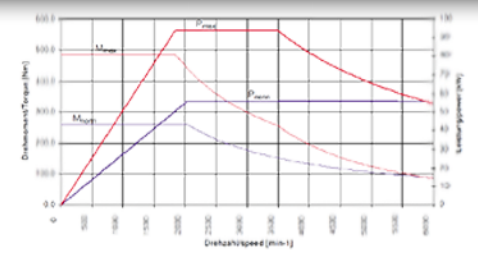
Transmission test ability:
 Noise, vibration and harshness
 Transmission error
 Single flank test
 General function test

Other configurations on request



End Of Line test applications for gearboxes

"Quality is nothing without control"



**Water cooled servo motors
High precision torque sensor**

SEJFO GROUP AB

Rosenlundsgatan 13, SE-731 50 Köping, Sweden
 Box 215, SE-731 25 Köping, Sweden
 Tel. +46 (0)221-341 10
 www.sejfo.se • sejfo@sejfo.se